



Accumulator Head - Blow moulder for technical parts

Width: 5200mm
Length: 3475mm
Depth: 2320mm

Key Data

		HESTA SG
		mm
Mould Length	A	800
Mould Thickness	B	2x140 (2x320)
Distance between tie bars		
Vertical		900
		900
Horizontal	D	500
Opening Stroke	E	360
∅ Tie Bars		70
Platen daylight		640 (1000)
Clamping Force		200 kN

Accumulator Heads		0,5 l	1,2 l	2,5 l	2x0,25 l	2x0,5 l
Ejection Time	sec.	4	5	6	4	4
Nozzle	mm	60	150	190	37	90
Centre Distances	mm				125	125
Heating Capacity	kW	4	9,6	16,3	6,7	7,6

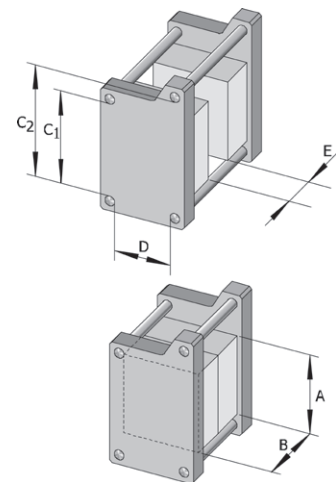
Extruder		∅ 50	∅ 60	∅ 70	∅ 80
Drive Electromotor, infinitely variable					
Screw Speed	min ⁻¹	0 ... 85	0 ... 80	0 ... 80	5 ... 70
Screw	mm	50 / 22 D	60 / 22 D	70 / 22 D	80 / 22 D

Energy Requirements

Electrical Drives for 200kN	kW	5,7	5,7	5,7	5,7
Electromotor Extruder	kW	17	27	30	54
Heating Capacity Extruder	kW	12	17	24	22,3
Elektro Antrieb Kalibriren	kW	2,2	2,2	2,2	2,2
Electric Control, approx.	kW	2	2	2	2
Hydraulik Antrieb ca.	kW	12	12	12	12
Total Connected Load,	kW	50,9	65,9	75,9	98,2
Air Requirement, approx.	NI/min	250	350	600	700
Air Working Pressure	bar	7-10	7-10	7-10	7-10

Cooling Requirement

Extruder	kJ/h	8.000	12.000	12.000	12.000
Blow Mold	kJ/h	22.000	30.000	38.000	40.000



- Modification reserved
- Standard voltage: 3 x 380V, 50 Hz
- Alternative centre distances possible
- Please ask for additional equipment

The effective consumption data for Energy- and cooling requirements are product dependent. The Air requirement is an approximate value, he can change according to produced article.